

IMMEDIATE AVAILABILITY – for PURCHASE or TOLL CASTING

TCM-402M PROCAST® TAPE CASTING SYSTEM TAPES UP TO 26" (660mm) WIDE



This Equipment is in Excellent Condition and Fully Operational.
Built in 2001 for LTCC manufacturer and re-acquired by HED in 2009.
Currently Installed in HED dedicated clean laboratory for tape casting.
Original Owner Maintained Equipment in Class 1000 Clean Room.
Many optional features including panel computer and automatic slurry control.
Built to NFPA-86 and NEC standards for industrial equipment.

We are offering this tape caster with the same one (1) year limited warranty provided with new equipment. Turnkey installation including shipping, installation and commissioning is also available.

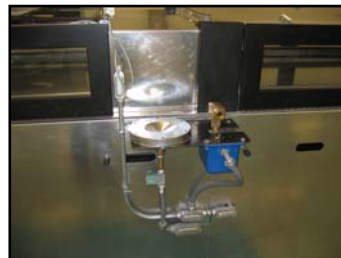
CONTACT: Kathleen Kriskewic, (609) 466-1900 extension 124 , Email: kkriskewic@hed.com

General Specifications of the TCM-402M:

- Overall Length 55' (16764 mm)
- Casting/Coating Length 40' (12192 mm)
- Casting/Coating Width 26" (660 mm)
- Casting Surface 30"(762mm) x 48"(1219mm) Granite
- Casting/Coating Rate 12 - 60 ipm (305-1524 mm/Min)
- Unwind Diameter 14" (356 mm) Maximum
- Rewind Diameter 14" (356 mm) Maximum
- Drying Chamber 40' (1016 mm) – Four Zones
- Heat Source Electric Resistance Elements
- Operating Temperature 30-100°C Normal / 150°C Max.
- Electrical Source 480V/3Ph/60Hz
- Auto Slip Level Control 0.0–1.0"(0-25mm) +/- .04"(1mm)
- Operator Interface Touch Screen w/ ProCast HMI
- Air Intake Filter HEPA Type - 95% @3 Microns
- Solvent Sensor Combustible Gas Monitor Type
- Carrier Alignment Microprocessor Web Guide Type
- Carrier Tension Microprocessor Control Type



Solvent Sensor



Slurry Filter and Control Valve



Carrier Tension Brake



Process Air Heater



Casting Area Access Windows



Procast HMI Touch Screen

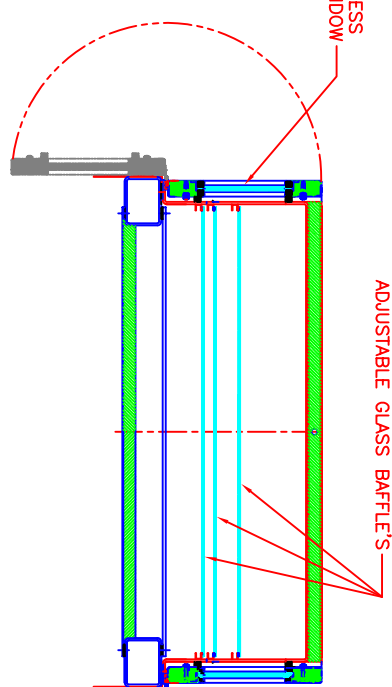
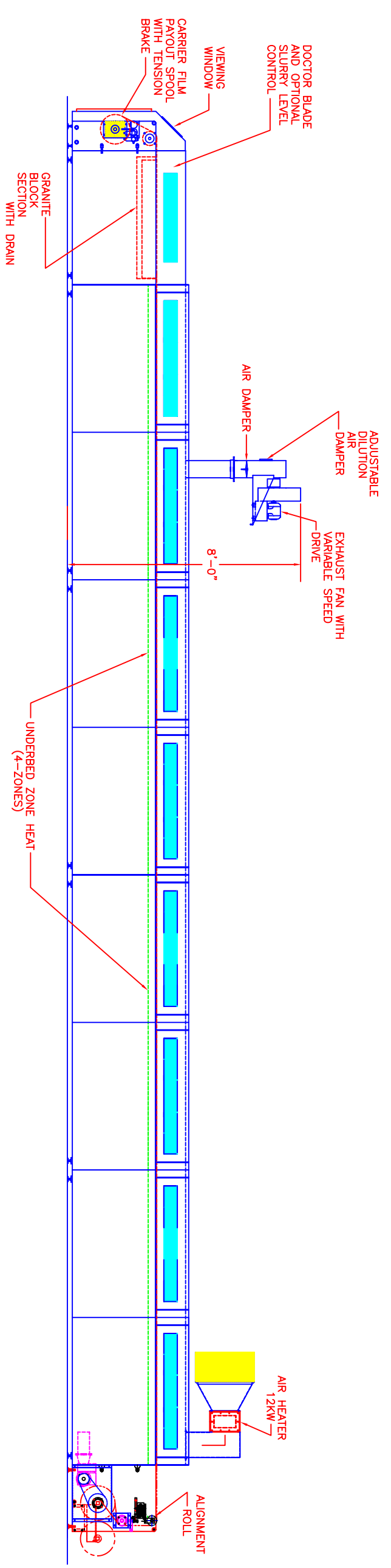
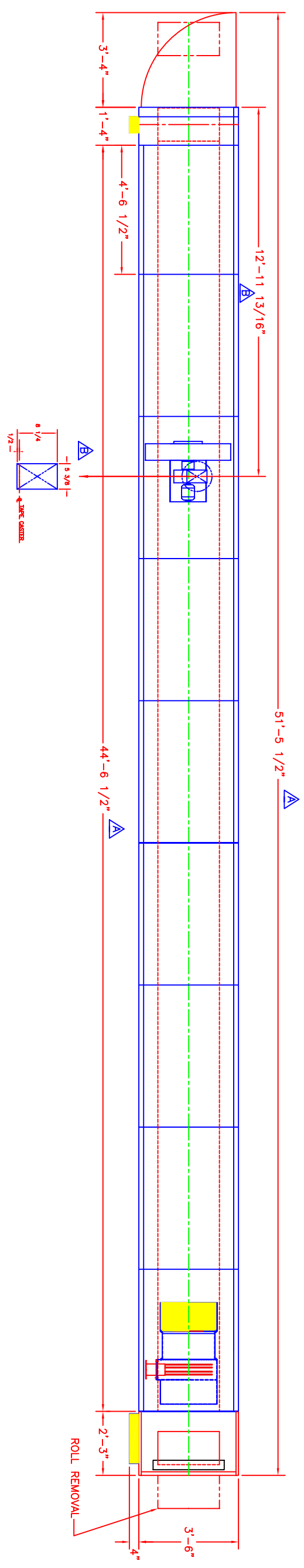
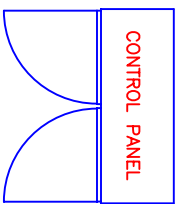


Aligner and Take-Up Controls



Filtered Air Inlet

CONTACT: Kathleen Kriskewic, (609) 466-1900 extension 124, Email: kkriskewic@hed.com



REV.	BY	DATE	APPROV.	DATE

DIMENSIONS ARE IN INCHES-TOLERANCES: 2 PLACE 2/101 FRACTIONS 1/32 ANGLES 1/16 DEG		REVISION MADE <input type="checkbox"/> UNIQUE DIVISION OF HED INTERNATIONAL INC.
TITLE: MODEL TQM-402M TAPE CASTING/COATING MACHINE		KILNS AND FURNACES RINGOLES NJ 08551
DRAWN: JPS SCALE: 3/4"=1'-0"	DATE:	NO. KDOXXX-1

THIS DRAWING IS THE PROPERTY OF HED INTERNATIONAL INC. IT IS TO BE USED FOR THE PROJECT AND NOT TO BE REPRODUCED, COPIED, OR DISSEMINATED WITHOUT WRITTEN PERMISSION OF HED INTERNATIONAL INC.